

Corticon Enterprise Data Connector

Simplify: Model-Driven Data Integration for Decision Services



Corticon Enterprise Data Connector connects your decision services to external data sources such as relational databases, legacy systems, file repositories and web services. Corticon EDC creates a direct connection from your decision services to external data as they process, without expensive data integration middleware or complex SQL coding.



Reduce Complexity with Model-Driven Connectivity

Data connectivity can be one of the biggest bottlenecks in creating, changing and deploying enterprise applications. Corticon Enterprise Data Connector (EDC) clears the path with a unique, model-driven approach to data connectivity that eliminates the complex SQL coding traditionally associated with integrating business rules and enterprise applications. Corticon Enterprise Data Connector automatically generates optimized SQL needed to perform database operations, giving you a direct data connection without the need for complicated programming.

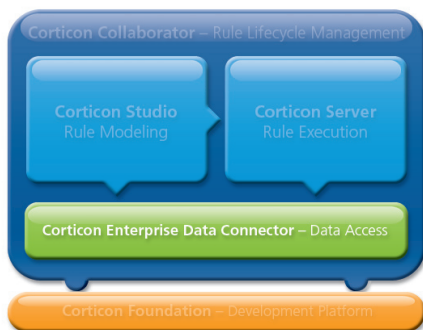
Seamless Access to All of Your Organizational Data Sources

Corticon Enterprise Data Connector is available in two versions to meet all your data connectivity needs. Corticon Enterprise Data Connector - Single Source seamlessly connects to any of your organization's relational databases. Corticon Enterprise Data Connector - Multi-Source takes over from there and adds connectivity to packaged applications, legacy data sources, web services, XML and message queues. It also lets you connect to multiple data sources at the same time, using a virtualization layer that presents a single normalized view of your data, even when gathered from heterogeneous data sources.

Increase Rule Agility without Impacting Your Applications

With Corticon Enterprise Data Connector, you can manage your business rules independently from your data sources. Through Smart Mapping technology, you can design business rule vocabularies in Corticon independent of the naming conventions in your data sources. Corticon EDC generates and maintains the mapping between business terms and data items. And when business rules change, your decision service interface does not. The result is reduced impact on applications that call a decision service.

CORTICON BUSINESS RULES MANAGEMENT SYSTEM



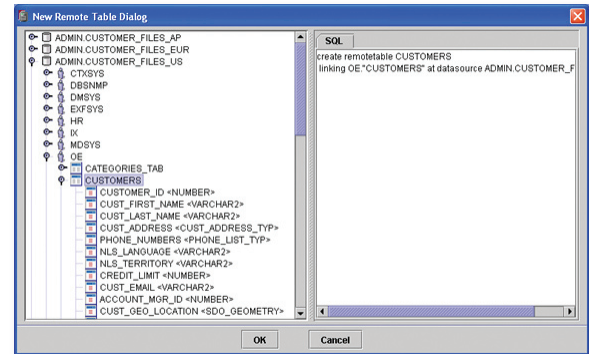
Key Features of Corticon Enterprise Data Connector

Corticon Enterprise Data Connector - Single Source provides seamless integration between your business rules and the data stored in your relational databases.

Corticon EDC - Single Source creates a direct connection from decision services executing on Corticon Business Rules Server to the external data needed by the decision services as they execute. Sometimes an application calling Corticon Server will deliver all the data needed for a decision service to return a result. But in other cases, it is preferable to have the decision service connect directly to a data source to create, read, update, or delete data. Corticon EDC - Single Source enables this connectivity with:

- **Seamless Connection to Relational Data:** Connects each decision service to a single, relational database.
- **Integrated within Corticon Business Rules Modeling Studio:** Fully integrated into the vocabulary editor and available to advanced users in integration and deployment mode.
- **Smart Mapping Technology:** Automatically map business terms in the rules vocabulary to matching terms in your database. Business terms and data models remain independent. With no manual mapping required, non-experts are empowered to create and maintain maps themselves.
- **Smart Retrieval:** Retrieves data from your external data source only when needed, and returns only the specific data required.

- **Optimized SQL Generation:** Using a model-driven approach, analyzes your business rules and your choice for database access (no DB access, Read or Read-Write) and automatically generates the optimized SQL needed to perform the database operations. The optimized SQL becomes a working part of the decision service that is loaded into the Corticon Business Rules Server.



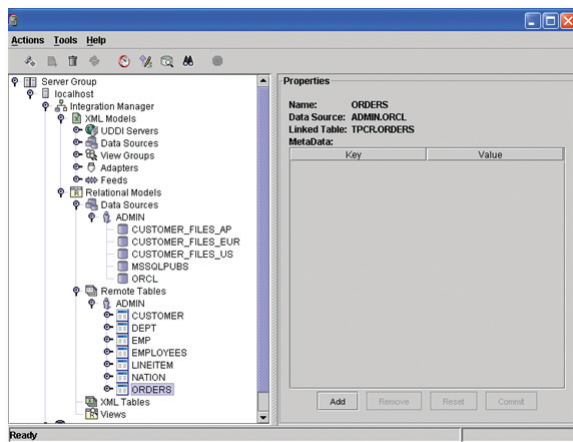
Automatic Generation of Optimized SQL

- **Look-up Table Integration:** Map enumerated value sets used by the vocabulary to database look-up tables, then synchronize the table contents with the vocabulary whenever the contents change. The look-up table stays in an external data source for easy maintenance.
- **Rule Parameterization:** Assign values to special attributes in a rule by querying external data sources during execution of the rule at run time. Enables form-based rule maintenance, exposing the values of a constrained set of business terms. Changes to any of the values are instantaneously picked up by executing decision services.
- **Real-time and Batch Modes:** Run in real-time in a request/response mode, or run in batch by retrieving cases stored in the database for batch processing. Either way, caching technology makes data access fast.
- **Caching:** Enhance performance with the caching of external data used in decision service processing.

Corticon Enterprise Data Connector - Multi-Source links decision services to any number of data models and their physical sources through a virtual, unified view of the organizational data.

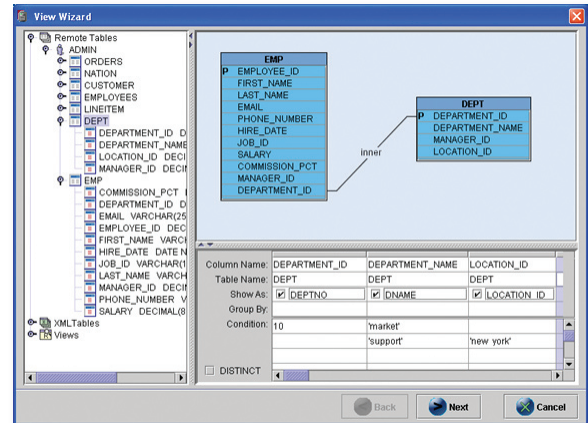
Corticon Enterprise Data Connector - Multi-Source extends the capabilities of EDC - Single Source by enabling access to multiple data sources from both relational and non-relational data stores. By generating and maintaining a virtual, relational view across all data sources, EDC - Multi-Source reduces the complexity and maintenance typically associated with enterprise data integration. Corticon EDC - Multi-Source delivers state-of-the-art, model-driven, enterprise-wide data access and integration for your business rules.

- **Multiple Connections to Multiple Data Sources:** Links decision models to any number of data models and their physical sources, including both structured and unstructured data stores, such as documents, data warehouses, databases, web services and message queues.
- **Unified View of Data:** Provides a single view of data and manages a unified metadata model across all data sources.

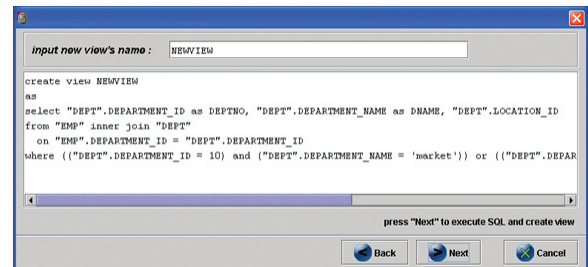


Unified View of All Data Sources

- **Model-Driven Data Mapping:** EDC - Multi-Source connects vocabulary model to data model and maintains the map for you. No data analysis experience required.
- **Graphical Modeling Tools:** Drag the tables you want to join into the design window, point and click to add whatever join criteria you want, and Corticon EDC - Multi-Source automatically generates the SQL for you.



Describe Data Access Visually



EDC - Multi-Source Generates Equivalent SQL

- **Comprehensive Administrative Control:** Access management for one or many EDC server instances. Efficient remote server configuration and maintenance. Resource management of data sources, remote tables, views, users and groups. Session and transaction monitoring.

Summary of Benefits

- Reduce complexity with model-driven connectivity
- Seamless access to all of your organizational data sources
- Increase rule agility without impacting your applications

Summary of Features

- Corticon EDC – Single Source provides seamless integration between your business rules and the data stored in your relational databases
- Corticon EDC – Multi-Source links decision services to any number of data models and their physical sources through a virtual, unified view of the organizational data
- Smart Mapping Technology
- Automatically generates optimized SQL for full Read, Write and Delete operations
- Smart Retrieval
- Supports real-time and batch execution modes

Data Sources

- Apache Derby, IBM DB2, Informix, Microsoft Access, Microsoft SQL Server, MySQL, Oracle, PostgreSQL, Sybase, Teradata, and JDBC- compliant relational databases
- XML and CSV file formats
- Oracle, PeopleSoft, Salesforce.com, SAP, Siebel and other enterprise applications
- Web services
- Message Queues

System Requirements

Windows 2000/2003 or XP, AIX 5.2 or higher, Solaris 8, 9 or 10, Red Hat Linux 8.0 or higher

An Integral Part of the Corticon Business Rules Management System (BRMS)

Corticon Enterprise Data Connector is part of the Corticon Business Rules Management System (BRMS). As an embedded option within Corticon Business Rules Modeling Studio, it enables the Smart Mapping of your business rules to your organizational data. Corticon EDC's model-generated code seamlessly deploys with your decision services to execute within Corticon Business Rules Server. When used together, these products provide a complete platform for managing the lifecycle of decisions across the enterprise.

About

Corticon Technologies delivers Business Rules Management solutions that unleash "The Power of Decisions™", as enterprise assets. Many of the world's most successful organizations rely on Corticon to discover, model, execute and improve operational decisions (and associated business rules) within their enterprise systems. Recognized as a leading business rules vendor by industry analysts and thought leaders, Corticon's patented Business Rules Management System is the only solution with a model-driven design environment that guarantees the consistent, efficient and reliable execution of a company's business rules and decisions. Corticon is a privately held company headquartered in Redwood City, California, with European headquarters in The Netherlands, worldwide distribution through local Corticon offices, and an extensive partner network. Corticon's products are in use today at many of the world's largest banks, insurance companies, media companies, telecommunication providers and government organizations, collectively automating millions of decisions per day.

For more information, call Corticon today at +1.888.619.2424 or email us at info@corticon.com

Corticon Global

Corporate Headquarters

1000 Bridge Parkway
Redwood City, CA 94065
Telephone: +1 888.619.2424
Fax: +1 650.212.2727
Email: info@corticon.com

Corticon Europe

Suite 16
3335 EB Zwijndrecht
The Netherlands
Telephone: +31 78.629.0203
Fax: +31 78.629.0202
Email: info@corticon.com

Sales

sales@corticon.com

Investors

investors@corticon.com

Public Relations

pr@corticon.com

Partnerships

alliances@corticon.com

Technical Support

support@corticon.com