

# Corticon Business Rules Collaborator

Team: Manage and Coordinate Business Rules Development



Corticon Business Rules Collaborator is a multi-user solution to manage business rule projects throughout their development and maintenance life cycle. Corticon Business Rules Collaborator helps teams manage and maintain control over all aspects of the rule discovery, modeling, and deployment process.



## **Streamline Enterprise Rules Management for Single or Multiple Teams**

With Corticon Business Rules Collaborator, your teams can more effectively coordinate on rule projects across all stakeholders - from requirements gathering to production. Corticon Business Rules Collaborator provides a central repository for all Corticon assets, as well as related assets such as requirements documents, business process diagrams and object models. Corticon Collaborator is designed to support the requirements of a single team implementing a business rules project, or can as effectively be used by many teams, allowing critical business rules, tests and plans to be shared and controlled across many projects.

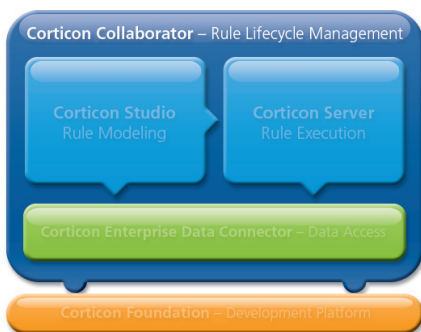
## **Assure Security, Version Control and Compliance**

Corticon Collaborator provides robust user-based and role-based access controls, minimizing the administration of permission definitions while ensuring maximum flexibility and control of user access rights. It also enables delegation of administration, so that authorized users with appropriate responsibilities can maintain control over relevant assets. In addition to controlling access, Collaborator offers sophisticated asset version control. It supports check-in/check-out, locking and configurable settings governing such parameters as how many versions to maintain - giving you exceptional control over your assets and how you want to manage your projects. Combined with Collaborator's full and configurable audit capabilities, you have complete flexibility and control over the capture of all asset activity for audit and compliance purposes.

## **Leverage Common Business Rules and Decisions Across the Organization**

Corticon Business Rules Collaborator helps you leverage your investment in business rules across your organization. You can manage and maintain shared vocabularies for use across multiple project teams. Even more powerful is Corticon's ability to help a project team leverage business rules and decision services from other teams. While one team may own and control all of the business rules around a commonly used decision, a product line or regional group can enhance that decision with product-line-specific or regionally specific rules, thereby maximizing reuse while meeting local requirements.

CORTICON BUSINESS RULES MANAGEMENT SYSTEM



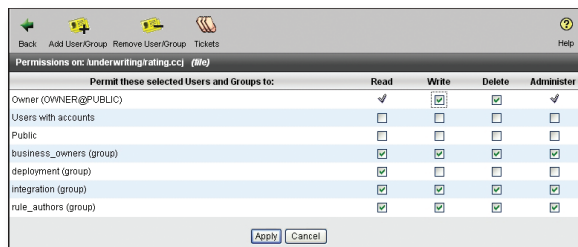
# Key Features of Corticon Business Rules Collaborator

Managing business rule projects through a complex lifecycle is challenging. Business rule projects evolve through development and maintenance cycles and require the attention of a number of contributors, reviewers and approvers. With Corticon Business Rules Collaborator, teams can work together to manage projects far more efficiently and effectively.

## Access Control and Security

Corticon Collaborator delivers a complete set of access control and security features to define the users and teams involved in your business rules projects, and ensure the right level of access for each:

- **Define Access Rights by User, Group or Roles:** Define access rights by individual user, teams based on your organizational structure or project team definitions, or groups of users that cross functional or team boundaries.
- **Multiple Levels of Access Permissions:** Give Read, Write, Delete and Administer rights to business rules, vocabularies or other team assets to any of the user, group or role-based definitions you have configured in the system.
- **Special Access Tickets:** Provide Special (one-time) Access Tickets to individual users or groups, giving them secure access to any business rule project assets in read or read/write mode for the length of time you specify.



Sophisticated Access Control by User, Team or Role

- **Integrated with LDAP and Active Directory:** Define users, teams, or roles; or use pre-existing definitions through integration with your LDAP Server or Microsoft® Active Directory.

## Version and Revision Management

Critical to team based development is knowing who made changes to any business rule project asset, while also maintaining a complete history of each revision of that asset to allow for change analysis and project asset roll-back and recovery:

- **Locking or Check-in/Check-out of all Business Rule Project Assets:** Lock an asset (such as a Corticon rule set) to read or edit the file, while prohibiting others from saving changes while the file is locked. Use check-in/check-out capabilities to save the project asset without creating a new version in the revision history.
- **Version and Revision Control:** Maintain each revision of all rule project assets in the repository, allowing you to open, analyze or recover a prior version. View a complete record for each revision, including who made the change and when was it made.
- **Audit Capabilities:** Turn on auditing for any group or individual rule project asset. Review all interactions with all rule project assets, including all actions (Read/Write) for all assets, versions accessed and which user performed which action. Provides additional information such as date for the action and even the IP Address of the user.

User	Action	Version	Date	IP Address
	Logging Enabled		2/3/08 3:40:33 PM PST	127.0.0.1
Darth Brooks (garth)	Read	1	2/3/08 3:47:48 PM PST	127.0.0.1
David Beckham (david)	Read	1	2/3/08 3:48:39 PM PST	127.0.0.1
David Beckham (david)	Read	1	2/3/08 3:48:39 PM PST	127.0.0.1
Darth Brooks (garth)	Read	1	2/3/08 3:50:03 PM PST	127.0.0.1
Darth Brooks (garth)	Read	1	2/3/08 3:50:03 PM PST	127.0.0.1
Darth Brooks (garth)	Read	1	2/3/08 3:50:05 PM PST	127.0.0.1
Darth Brooks (garth)	Read	1	2/3/08 3:50:06 PM PST	127.0.0.1
Darth Brooks (garth)	Read	1	2/3/08 3:50:06 PM PST	127.0.0.1
Mike Corleone (mike)	Read	1	2/3/08 3:50:41 PM PST	127.0.0.1
Mike Corleone (mike)	Read	1	2/3/08 3:50:41 PM PST	127.0.0.1
Mike Corleone (mike)	Read	1	2/3/08 3:50:42 PM PST	127.0.0.1
Mike Corleone (mike)	Read	1	2/3/08 3:50:43 PM PST	127.0.0.1
Mike Corleone (mike)	Read	1	2/3/08 3:50:44 PM PST	127.0.0.1

Audit Each Action on All Rule Project Assets

## Project Workflow and Approval Management

In many projects, different users play different roles. A business user might have responsibility for maintaining the business rules, but an IT user may have responsibility for integration and deployment of the decision service into your production environment. Corticon Collaborator's integrated workflow capabilities allow you to move each rule project asset through these natural stages:

Manage: DerbyRequirements.doc final (workflow)						
<b>Workflow File:</b> /derby/UServ Case Study Description v2.pdf						
<b>User Order:</b> Serial - Approvers and reviewers act in order listed						
<b>Start Date:</b> 2/3/06 3:07:19 PM PST						
<b>Status:</b> Running						
Tasked to	Type	Task Start Date	Due Date	Completion Date	Task Status	Skip Reassign
David Beckham	Mandatory Approval	2/3/06 3:07:19 PM PST	2/6/06	2/3/06 3:30:15 PM PST	Approved	
<b>Participant's Note:</b> "Approved by LOB"						
Garth Brooks	Mandatory Review	2/3/06 3:30:15 PM PST			Running	
Mike Corleone	Mandatory Review				Not Running	

Track Active Workflows for Change Review and Approval

- **Integrated Workflow and Task Management:** Define multi-step workflows with mandatory or optional review and approval activities. Launch workflows for new rules maintenance, start rule project asset review and approval cycles, track movement from modeling to deployment, or create any other workflow and approval activity.
- **Ad-hoc or Pre-built Workflow:** Create and save standard workflows for reuse, or allow users to build and launch ad-hoc workflows as needed.
- **Alerts, Monitoring and Tracking:** Alert users to new workflow tasks via "My Tasks" work area. Workflow owners and managers can track and monitor status of active workflows showing current stage and progress.

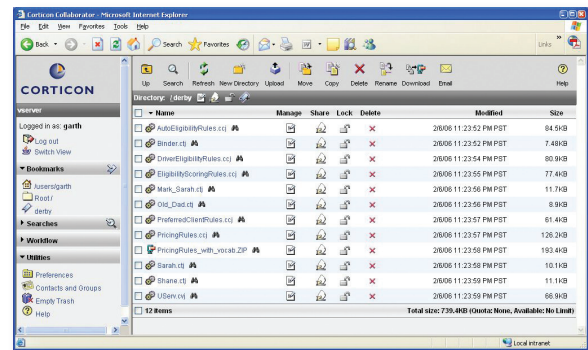
## Search and Change Management

Corticon Collaborator also provides multiple mechanisms to categorize information in the repository, search for, monitor, and proactively alert users when changes are made to rule project assets.

- **Data and Text-based Search:** Search for any rule project assets, including rulesheets and vocabularies, or non-Corticon assets such as UML models and business flow diagrams - using both text-based search and enhanced and extensible content-specific metadata.
- **Notification, Alerts and Change Impact Analysis:** Multiple mechanisms to help users find changes to vocabularies and rules, including an automated alert capability that notifies users when content they are interested in has been added, modified or even viewed by others.
- **Audit and Monitoring:** Review all interaction with all rule project assets including understanding all actions (Read/Write) for all assets, what version was being accessed and which user performed the action.

## Team Collaboration: Distributed Web-based Architecture

Corticon Collaborator is designed for both web and local desktop access, with a unique synchronized offline capability. Administration is designed with large enterprise deployments in mind, including storage quota management and the ability to effectively delegate administrative responsibilities across the organization.



Rich, Web-based Environment to Capture, Share and Manage All Rule Project Assets

- **Central Repository:** Provides a centralized repository of record for all rule project assets. This includes native Corticon assets such as vocabularies, business rules or tests, and other project assets such as project plans, UML models or any other project document.
- **Web and Desktop Access and Integration:** Supports both a lightweight web interface and sophisticated desktop integration through Corticon Collaborator Drive, which delivers native access to the repository as a virtual hard drive, including synchronized offline access.
- **Delegated Administration Including Storage Quota Management:** Web-based interface supports sophisticated enterprise use. Responsibility is moved to the right place in the organization. Administrators set access rights, user management and even user or group storage quotas.

## Summary of Benefits

Streamline enterprise rules management for single or multiple teams

Assure security, version control and compliance

Leverage common business rules and decisions across the organization

## Summary of Features

- Access Control and Security
- Version and Revision Management
- Project Workflow and Approval Management
- Search and Change Management
- Team Collaboration—Distributed web-based architecture

## Integral Part of the Corticon Business Rules Management System (BRMS)

Corticon Business Rules Collaborator is part of the Corticon Business Rules Management System (BRMS). It facilitates team management of the assets created with Corticon Business Rules Modeling Studio and deployed via Corticon Business Rules Server. When used together, these products provide a complete platform for managing the lifecycle of decisions across the enterprise.

## System Requirements

Server: Any platform supporting J2SE or J2EE, including Windows NT, 2000, 2003, IBM AIX, HP/UX, Linux, and Solaris.

Web/Application Server: IBM WebSphere, BEA WebLogic, Tomcat, Microsoft IIS, and Apache Web Server

Clients: HTTP-enabled devices, including those running Windows and Linux.

Database: IBM DB2, Oracle, PostgreSQL, or Microsoft SQL Server

## About

Corticon Technologies delivers Business Rules Management solutions that unleash "The Power of Decisions™", as enterprise assets. Many of the world's most successful organizations rely on Corticon to discover, model, execute and improve operational decisions (and associated business rules) within their enterprise systems. Recognized as a leading business rules vendor by industry analysts and thought leaders, Corticon's patented Business Rules Management System is the only solution with a model-driven design environment that guarantees the consistent, efficient and reliable execution of a company's business rules and decisions. Corticon is a privately held company headquartered in Redwood City, California, with European headquarters in The Netherlands, worldwide distribution through local Corticon offices, and an extensive partner network. Corticon's products are in use today at many of the world's largest banks, insurance companies, media companies, telecommunication providers and government organizations, collectively automating millions of decisions per day.

**For more information, call Corticon today at +1.888.619.2424 or email us at [info@corticon.com](mailto:info@corticon.com)**

## Corticon Global

### Corporate Headquarters

1000 Bridge Parkway  
Redwood City, CA 94065  
Telephone: +1 888.619.2424  
Fax: +1 650.212.2727  
Email: [info@corticon.com](mailto:info@corticon.com)

### Corticon Europe

Suite 16  
3335 EB Zwijndrecht  
The Netherlands  
Telephone: +31 78.629.0203  
Fax: +31 78.629.0202  
Email: [info@corticon.com](mailto:info@corticon.com)

### Sales

[sales@corticon.com](mailto:sales@corticon.com)

### Investors

[investors@corticon.com](mailto:investors@corticon.com)

### Public Relations

[pr@corticon.com](mailto:pr@corticon.com)

### Partnerships

[alliances@corticon.com](mailto:alliances@corticon.com)

### Technical Support

[support@corticon.com](mailto:support@corticon.com)